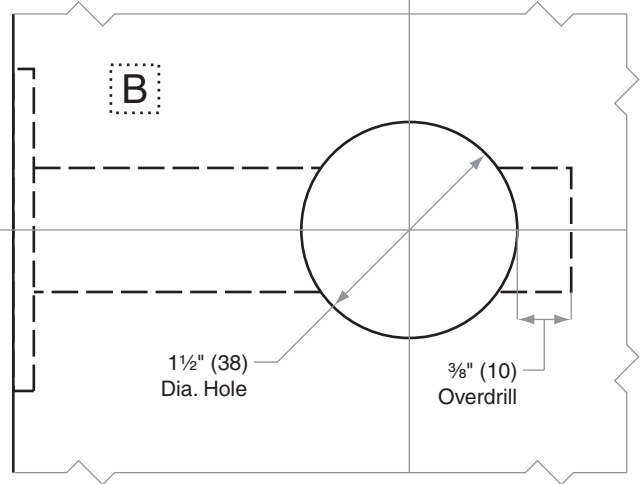
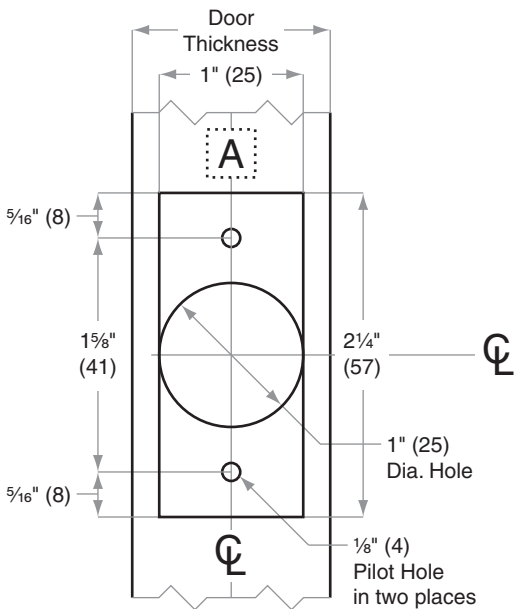
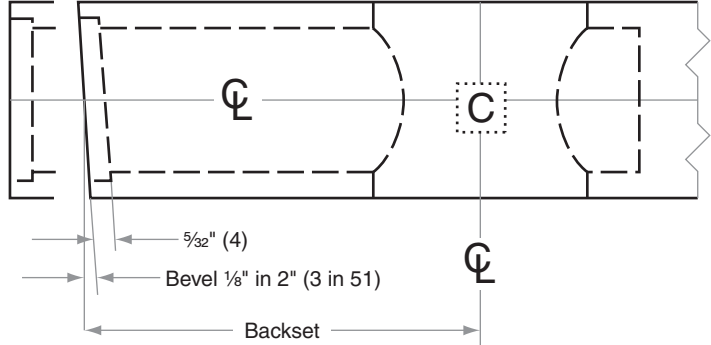
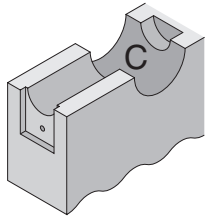
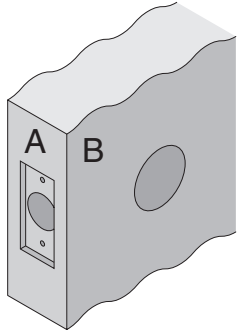


# D100/200-Series

## D261M, D271

- Door Type:** Wood or Composite, Flat or Beveled
- Door Thickness:** 1 $\frac{3}{8}$ " (35mm) – 1 $\frac{7}{8}$ " (48mm)
- Faceplate:** Square Corner, 1" (25mm) wide
- Backsets:** FD107-C, 2 $\frac{3}{8}$ " (60mm) | FD107-D, 2 $\frac{3}{4}$ " (70mm)



Dimensions shown in parentheses ( ) are in millimeters

**Job:** \_\_\_\_\_

**Date:** \_\_\_\_\_

**Door Thickness:** \_\_\_\_\_

**Remarks:** \_\_\_\_\_

**TEMPLATE  
FD107**