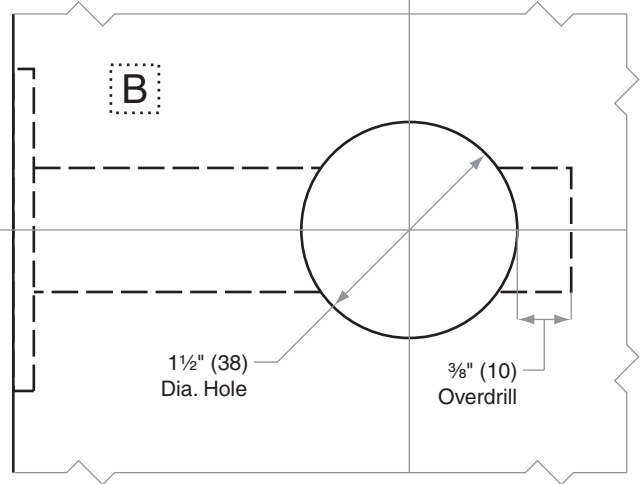
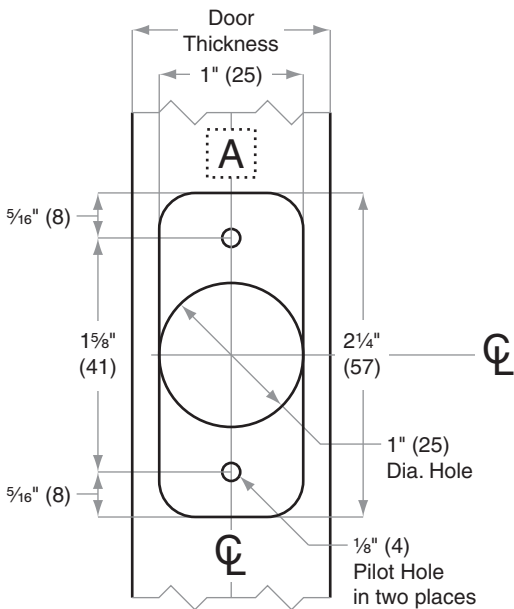
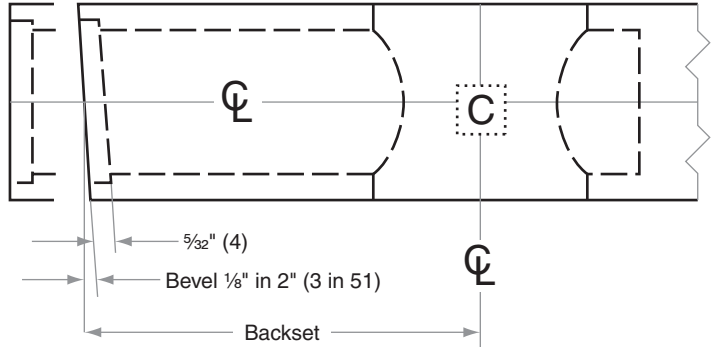
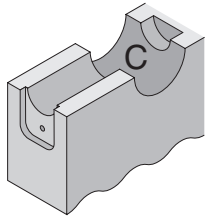
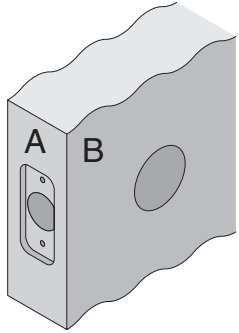


# D100/200-Series

## D261M, D271

- Door Type:** Wood or Composite, Flat or Beveled
- Door Thickness:** 1 3/8" (35mm) – 1 7/8" (48mm)
- Faceplate:** Round Corner, 1/4" (6mm) Radius, 1" (25mm) wide
- Backsets:** FD109-C, 2 3/8" (60mm) | FD109-D, 2 3/4" (70mm)



Dimensions shown in parentheses ( ) are in millimeters

**Job:** \_\_\_\_\_

**Date:** \_\_\_\_\_

**Door Thickness:** \_\_\_\_\_

**Remarks:** \_\_\_\_\_

**TEMPLATE  
FD109**