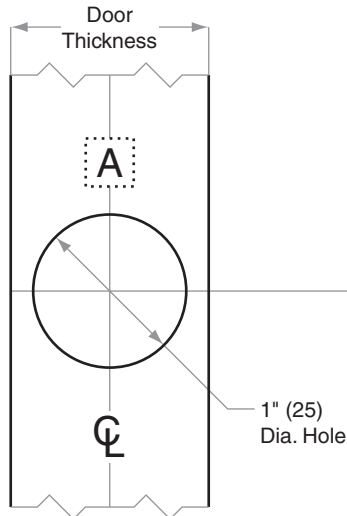
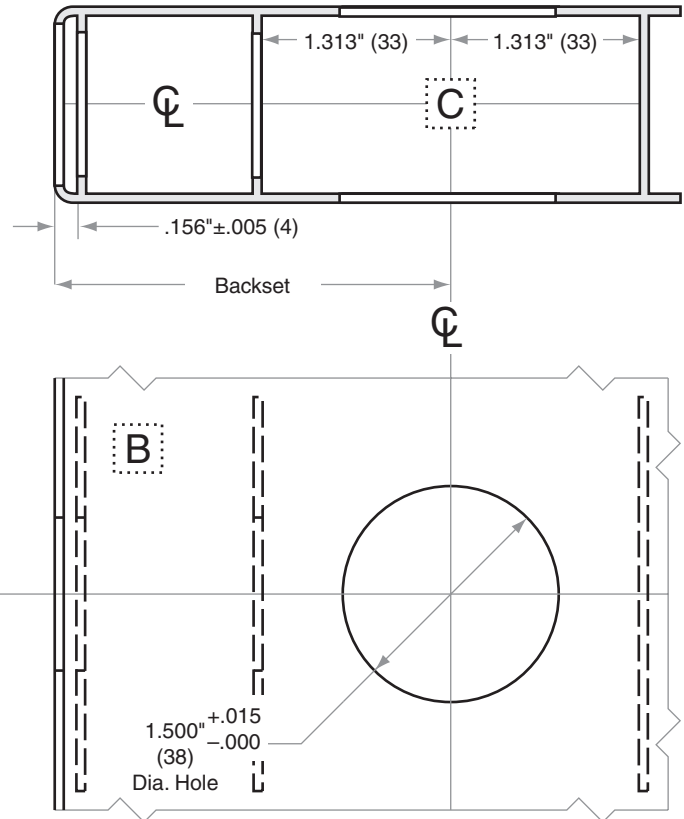
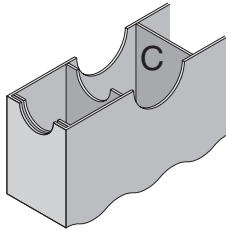
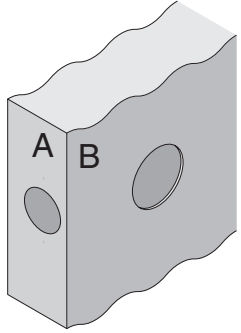


# D100/200-Series

## D261M, D271

<b>Door Type:</b>	Metal, Flat
<b>Door Thickness:</b>	1 $\frac{3}{8}$ " (35mm) – 1 $\frac{7}{8}$ " (48mm)
<b>Faceplate:</b>	Circular Drive-In
<b>Backsets:</b>	FD111-C, 2 $\frac{3}{8}$ " (60mm)   FD111-D, 2 $\frac{3}{4}$ " (70mm)

For metal door installations, suitable reinforcement is required to support latch in center of door and to prevent lateral movement



Dimensions shown in parentheses ( ) are in millimeters

**Job:** \_\_\_\_\_

**Date:** \_\_\_\_\_

**Door Thickness:** \_\_\_\_\_

**Remarks:** \_\_\_\_\_

**TEMPLATE  
FD111**