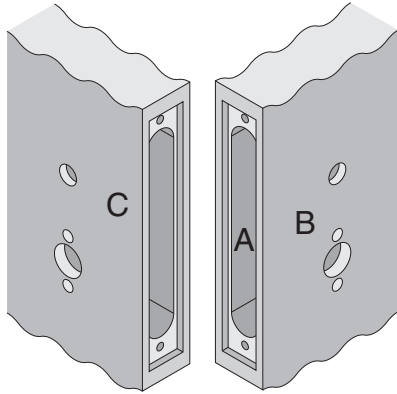


# M-Series

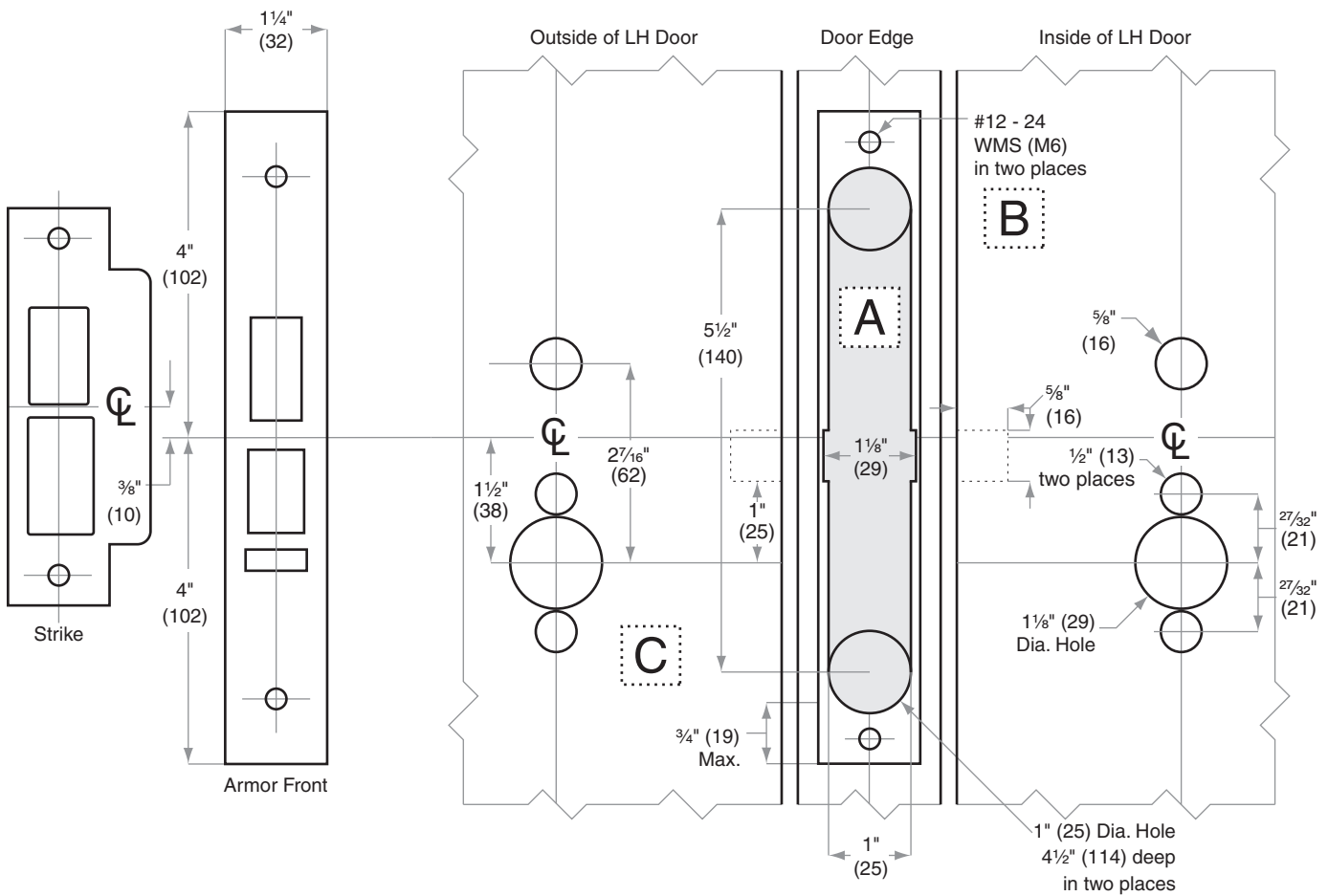
## M301, M311, M321

Door Type: Wood, Flat or Beveled



For Case and Strike dimensions, see Template FM1

### Left Hand (LH) Door Shown



Dimensions shown in parentheses ( ) are in millimeters

Job: \_\_\_\_\_

Date: \_\_\_\_\_

Door Thickness: \_\_\_\_\_

Remarks: \_\_\_\_\_

TEMPLATE  
**FM102**